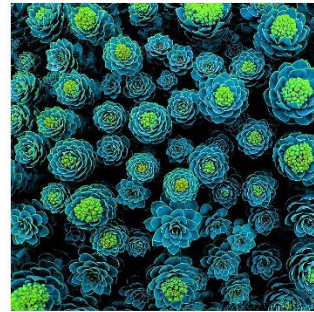


User Evaluation and Results

Case 1



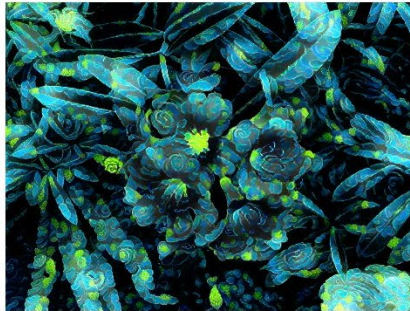
Original



Style



A



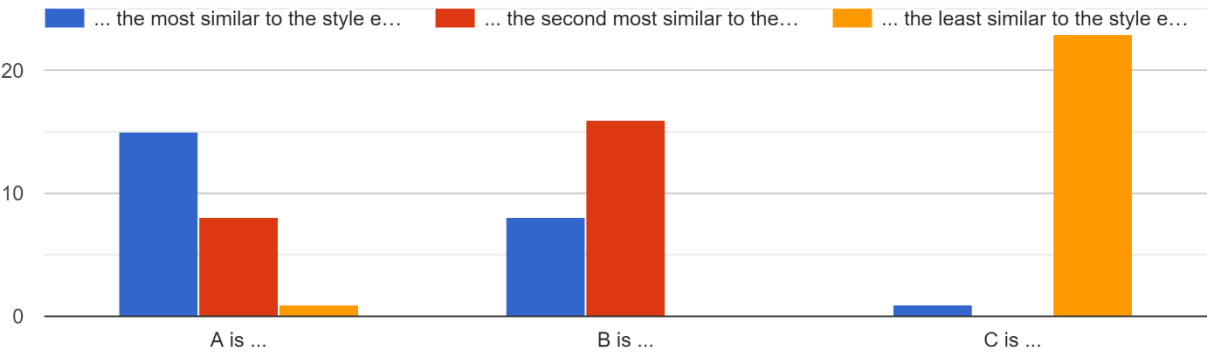
B



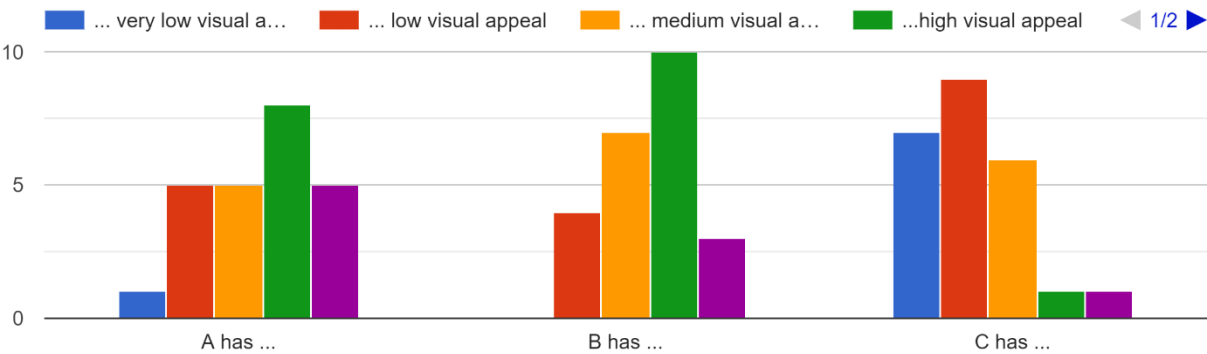
C

A: ours, B: ARF, C: StyleRF

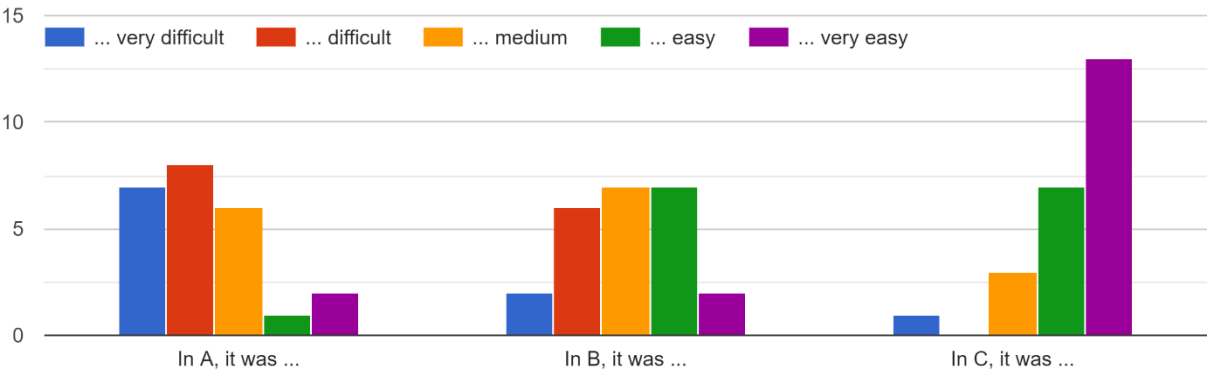
Please rank each of the stylized scenes (A, B, C) according to their similarity to the style exemplar ("Is the scene similar to the provided style exemplar?").



Please rate the stylized scenes (A, B, C) according to their visual appeal.



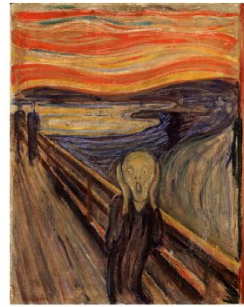
Please rate the stylized scenes (A, B, C) according to how easily you could recognize their original content (shapes, objects, etc.)



Case 2



Original



Style



A



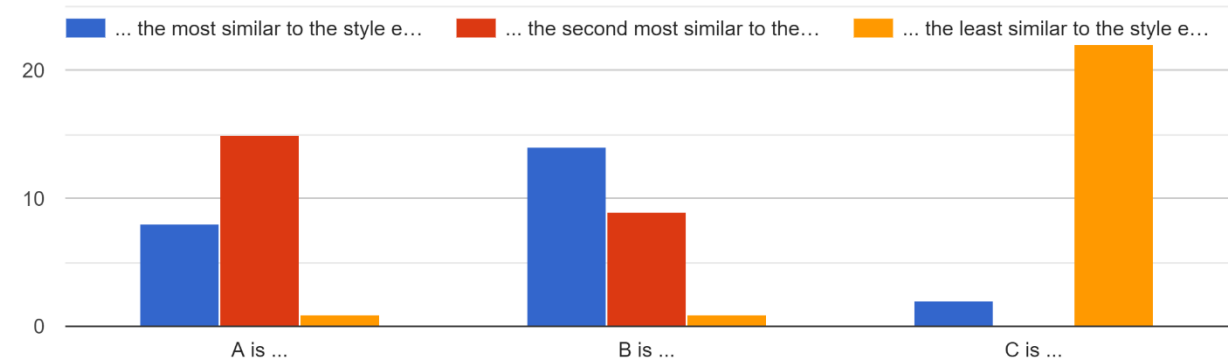
B



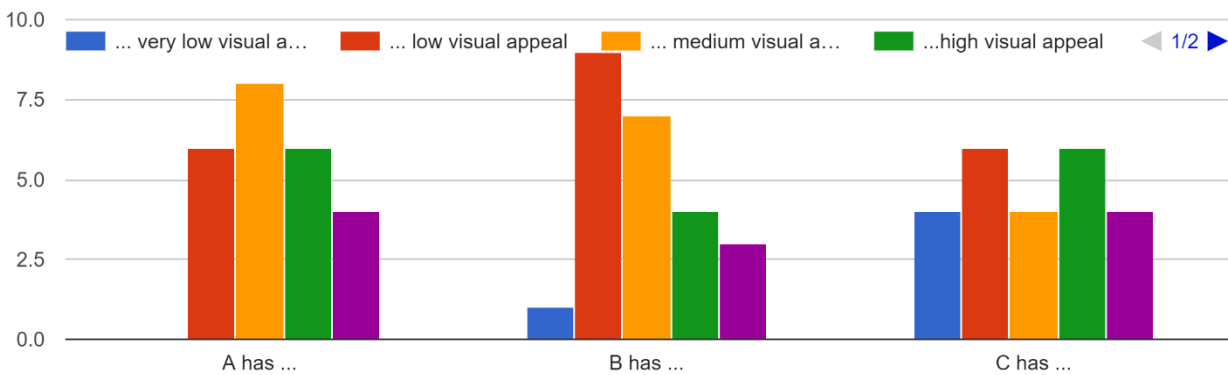
C

A: ours, B: ARF, C: StyleRF

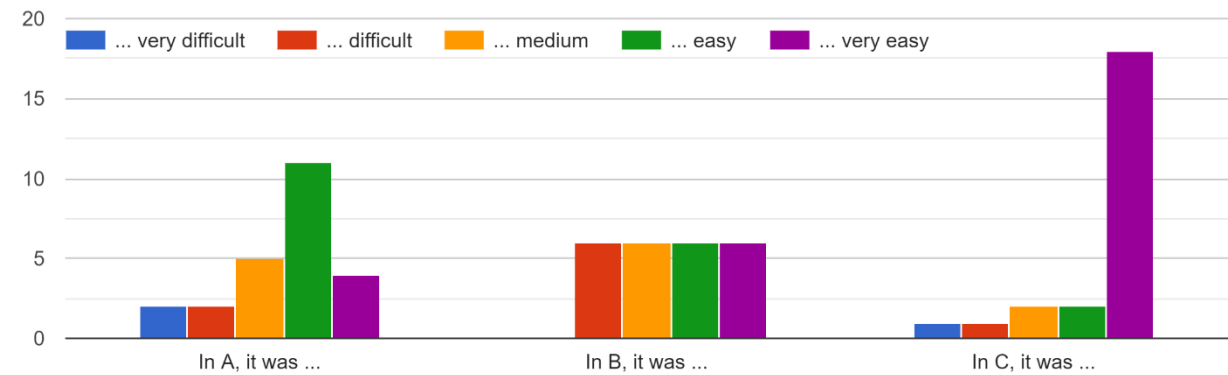
Please rank each of the stylized scenes (A, B, C) according to their similarity to the style exemplar ("Is the scene similar to the provided style exemplar?").



Please rate the stylized scenes (A, B, C) according to their visual appeal.



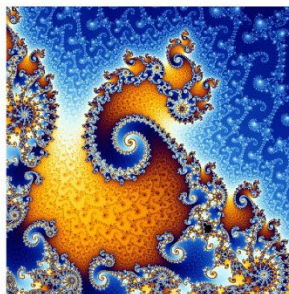
Please rate the stylized scenes (A, B, C) according to how easily you could recognize their original content (shapes, objects, etc.)



Case 3



Original



Style



A



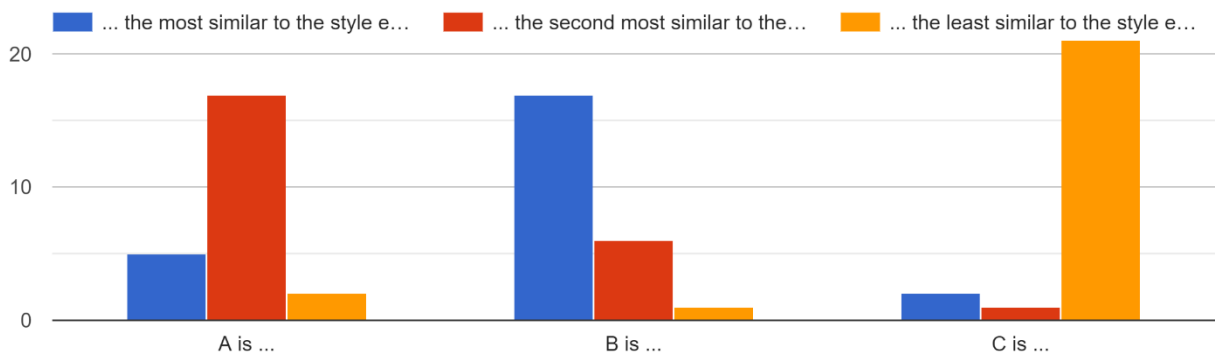
B



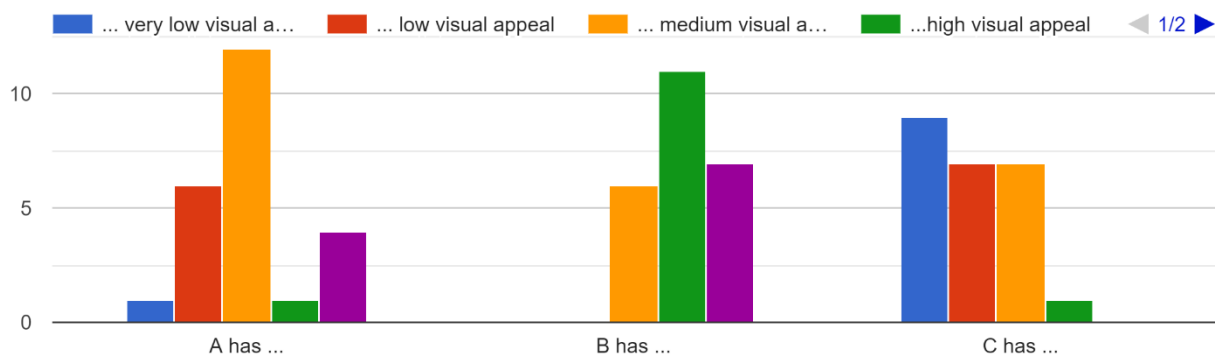
C

A: ours, B: ARF, C: StyleRF

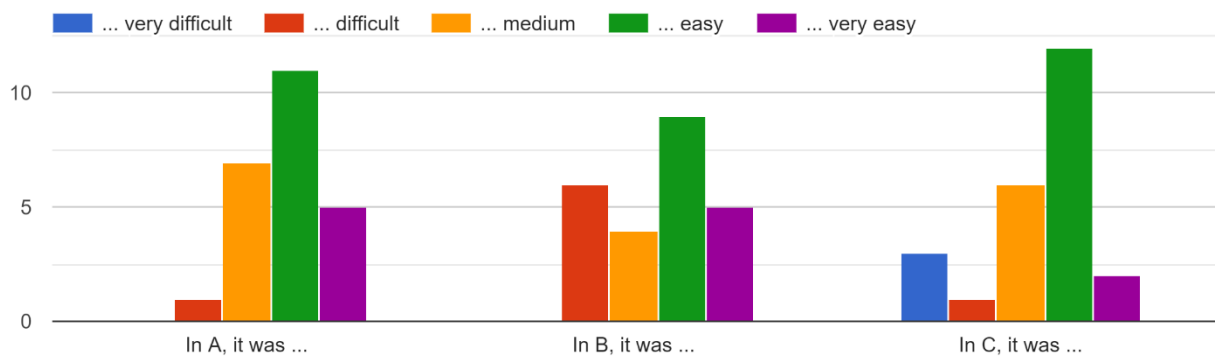
Please rank each of the stylized scenes (A, B, C) according to their similarity to the style exemplar ("Is the scene similar to the provided style exemplar?").



Please rate the stylized scenes (A, B, C) according to their visual appeal.



Please rate the stylized scenes (A, B, C) according to how easily you could recognize their original content (shapes, objects, etc.)



Case 4



Original



Style



A



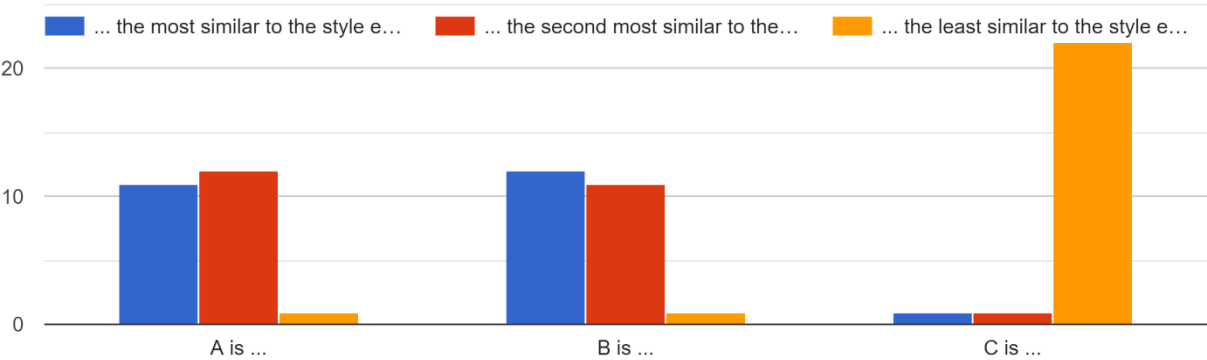
B



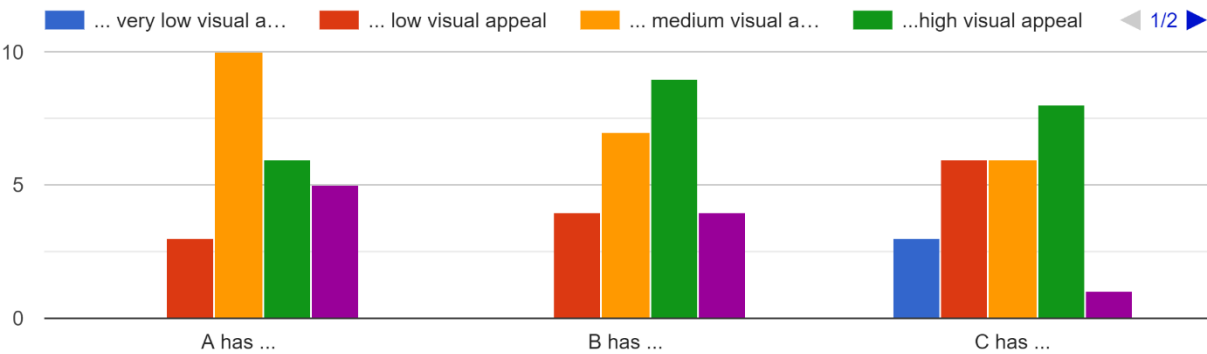
C

A: ours, B: ARF, C: StyleRF

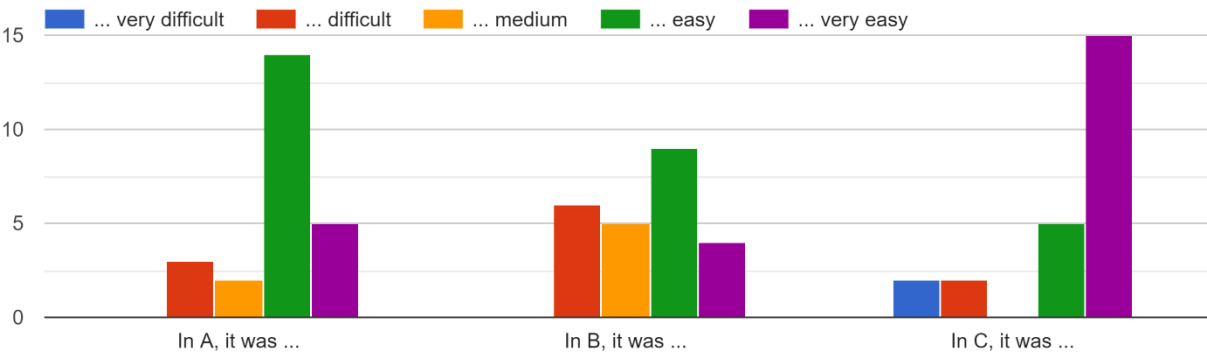
Please rank each of the stylized scenes (A, B, C) according to their similarity to the style exemplar ("Is the scene similar to the provided style exemplar?").



Please rate the stylized scenes (A, B, C) according to their visual appeal.



Please rate the stylized scenes (A, B, C) according to how easily you could recognize their original content (shapes, objects, etc.)



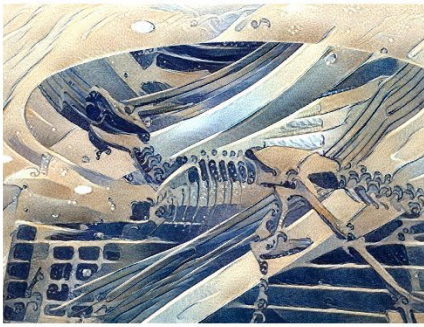
Case 5



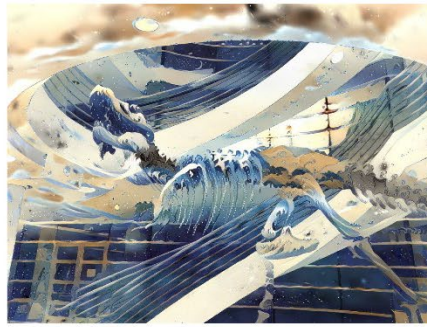
Original



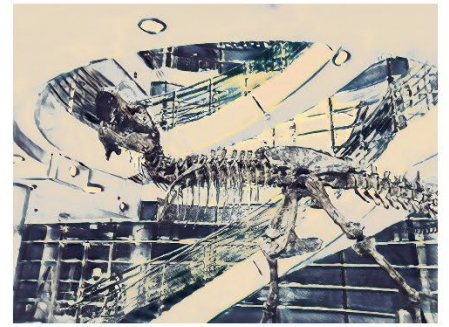
Style



A



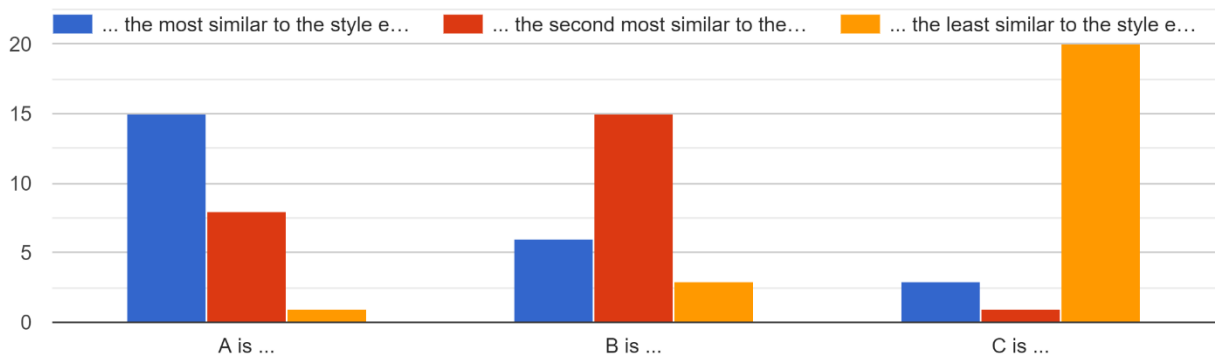
B



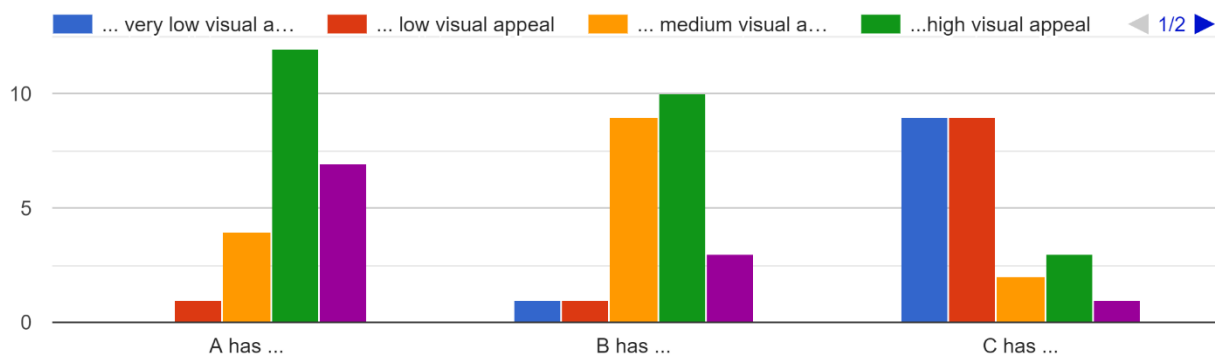
C

A: ours, B: ARF, C: StyleRF

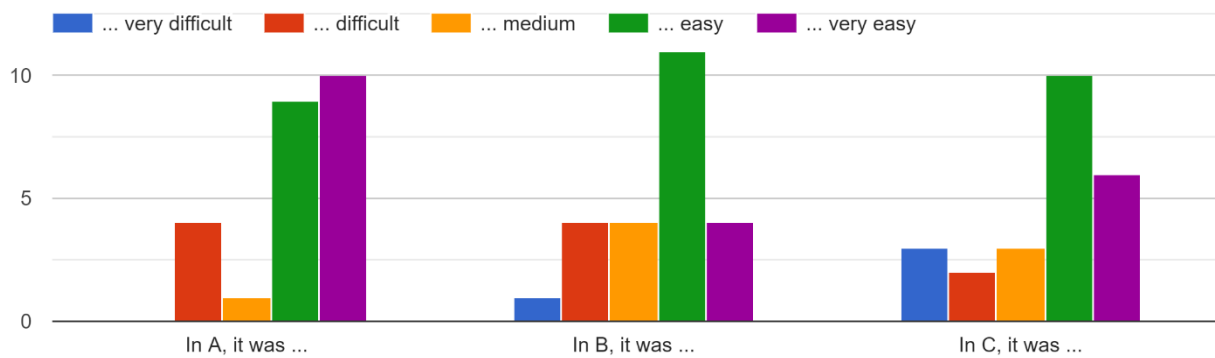
Please rank each of the stylized scenes (A, B, C) according to their similarity to the style exemplar ("Is the scene similar to the provided style exemplar?").



Please rate the stylized scenes (A, B, C) according to their visual appeal.



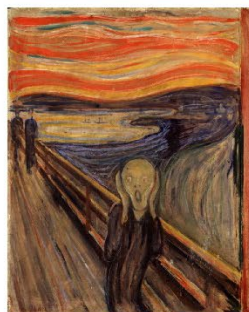
Please rate the stylized scenes (A, B, C) according to how easily you could recognize their original content (shapes, objects, etc.)



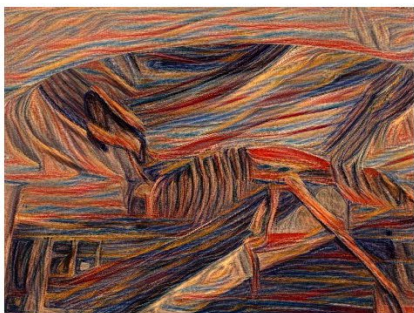
Case 6



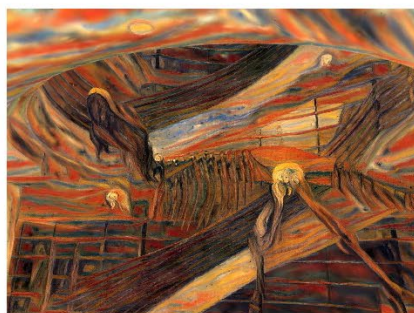
Original



Style



A



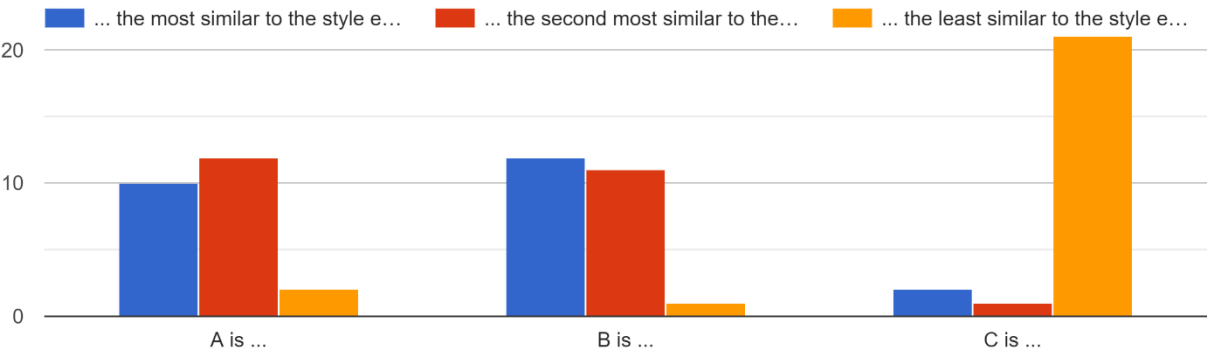
B



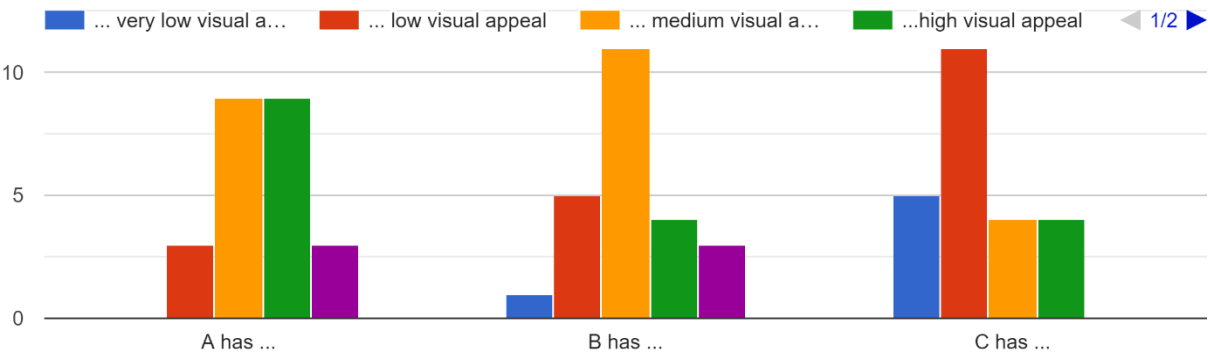
C

A: ours, B: ARF, C: StyleRF

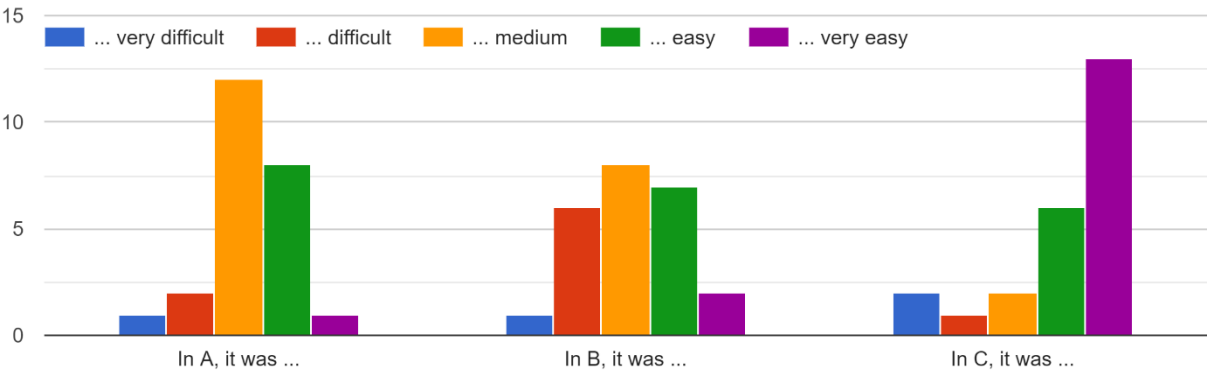
Please rank each of the stylized scenes (A, B, C) according to their similarity to the style exemplar ("Is the scene similar to the provided style exemplar?").



Please rate the stylized scenes (A, B, C) according to their visual appeal.



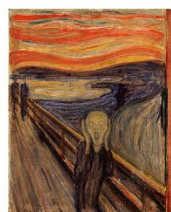
Please rate the stylized scenes (A, B, C) according to how easily you could recognize their original content (shapes, objects, etc.)



Case 7



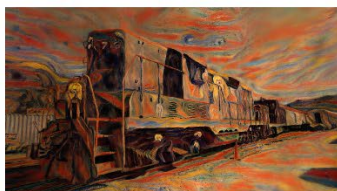
Original



Style



A



B



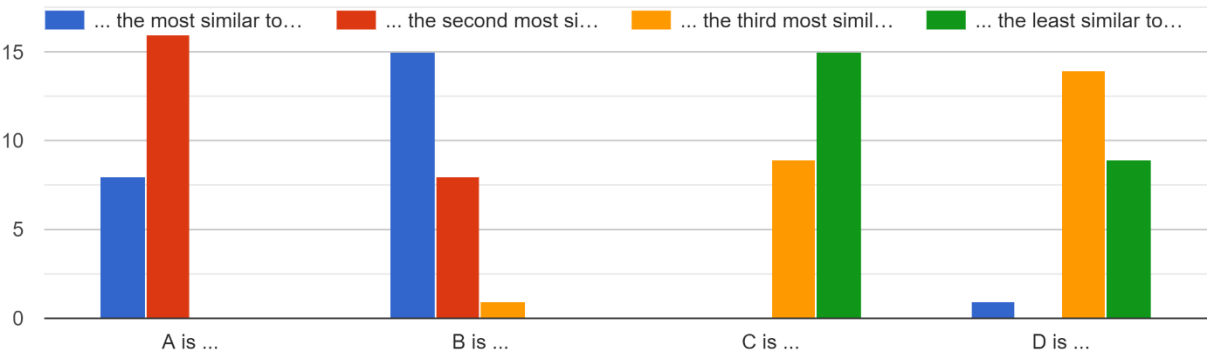
C



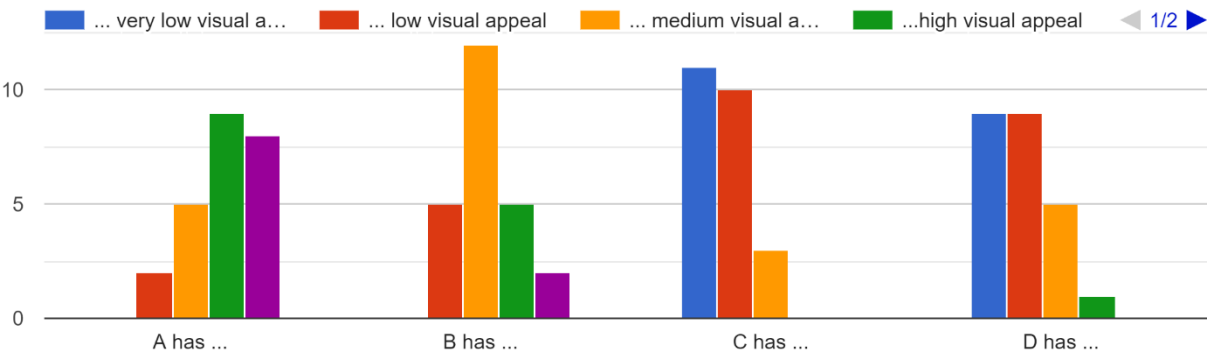
D

A: ours, B: ARF, C: StyleRF, D: StyleGaussian

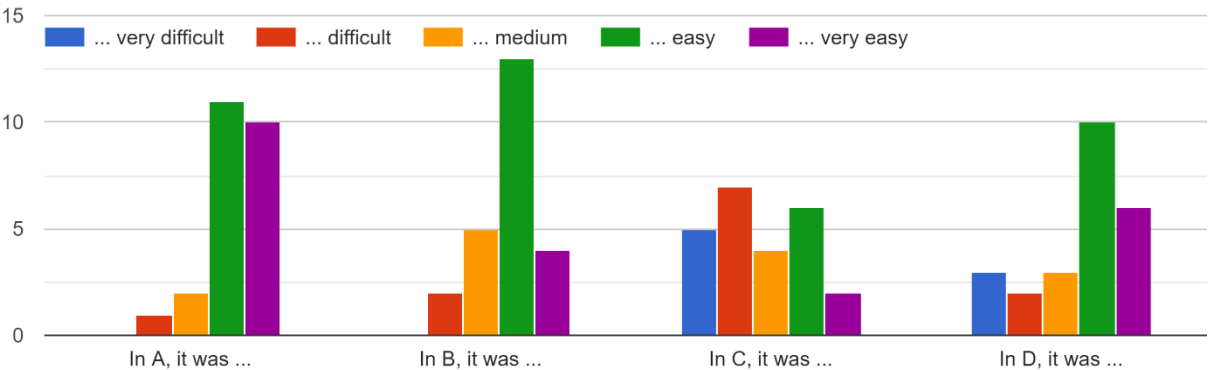
Please rank each of the stylized scenes (A, B, C) according to their similarity to the style exemplar ("Is the scene similar to the provided style exemplar?").



Please rate the stylized scenes (A, B, C) according to their visual appeal.



Please rate the stylized scenes (A, B, C) according to how easily you could recognize their original content (shapes, objects, etc.)



Case 8



Original



Style



A



B



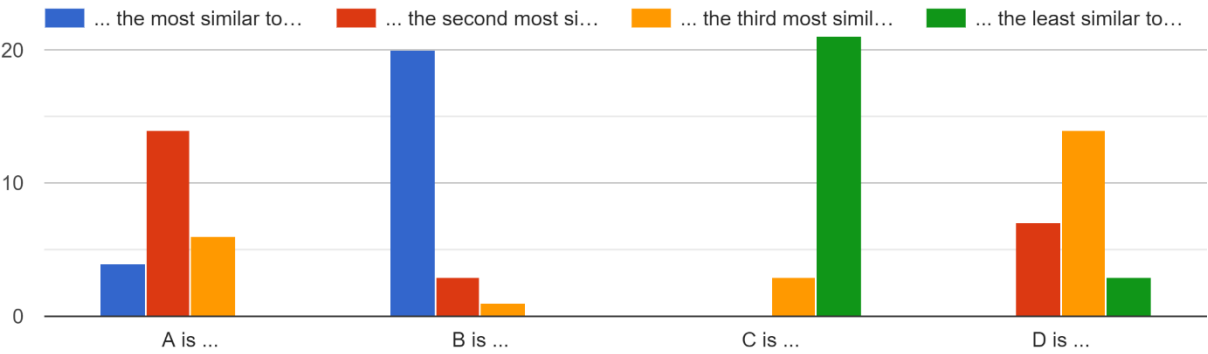
C



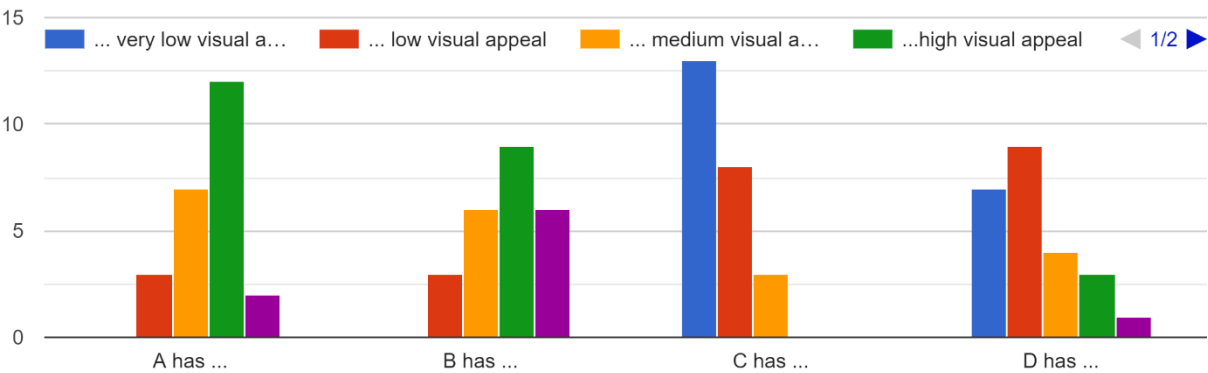
D

A: ours, B: ARF, C: StyleRF, D: StyleGaussian

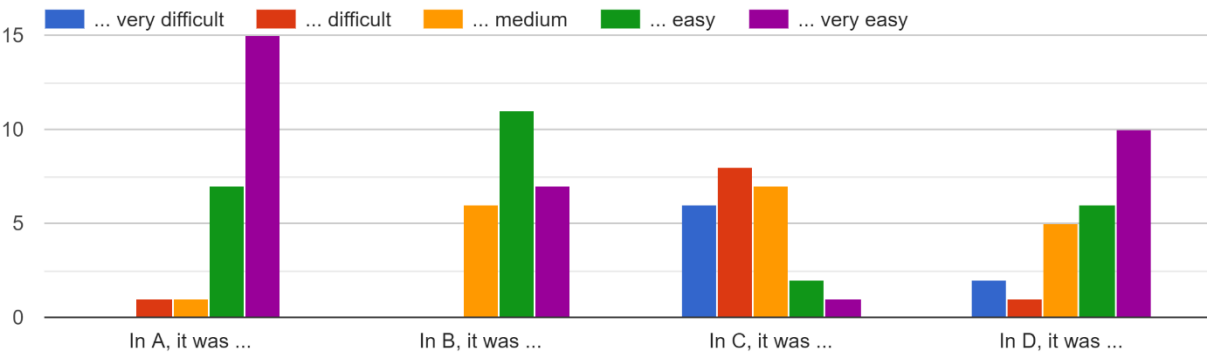
Please rank each of the stylized scenes (A, B, C) according to their similarity to the style exemplar ("Is the scene similar to the provided style exemplar?").



Please rate the stylized scenes (A, B, C) according to their visual appeal.



Please rate the stylized scenes (A, B, C) according to how easily you could recognize their original content (shapes, objects, etc.)



Case 9



Original



Style



A



B



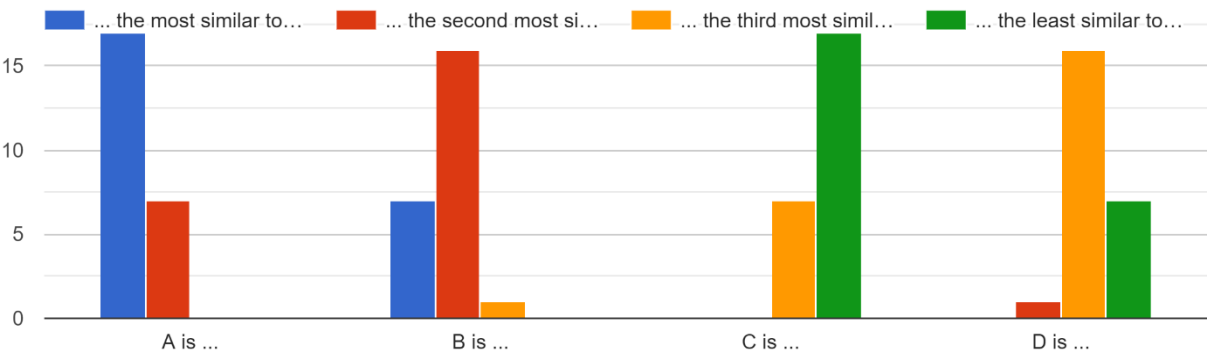
C



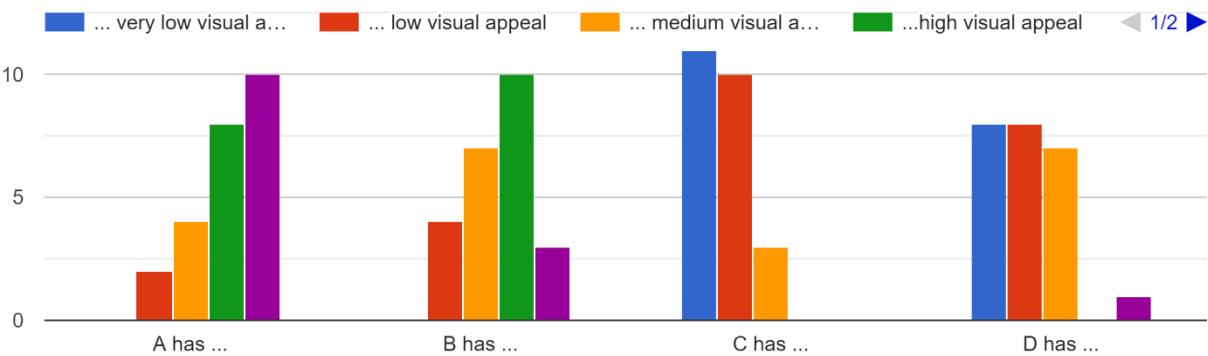
D

A: ours, B: ARF, C: StyleRF, D: StyleGaussian

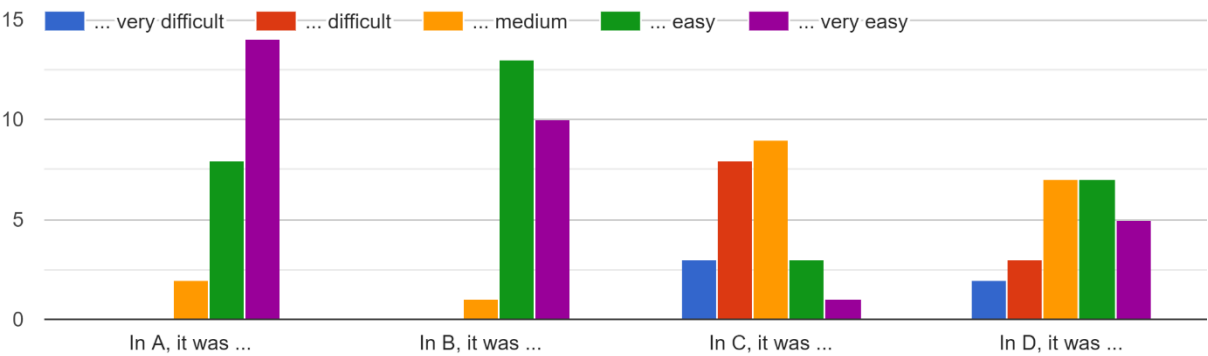
Please rank each of the stylized scenes (A, B, C) according to their similarity to the style exemplar ("Is the scene similar to the provided style exemplar?").



Please rate the stylized scenes (A, B, C) according to their visual appeal.



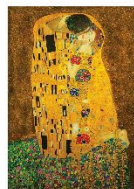
Please rate the stylized scenes (A, B, C) according to how easily you could recognize their original content (shapes, objects, etc.)



Case 10



Original



Style



A



B



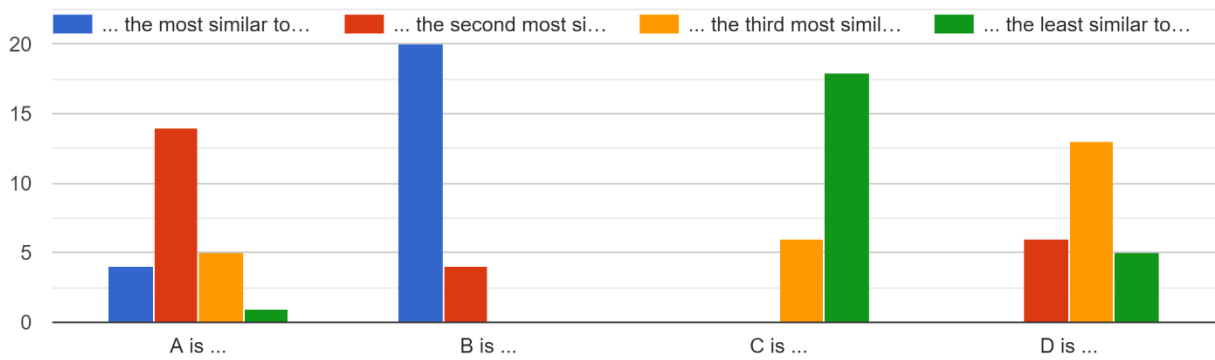
C



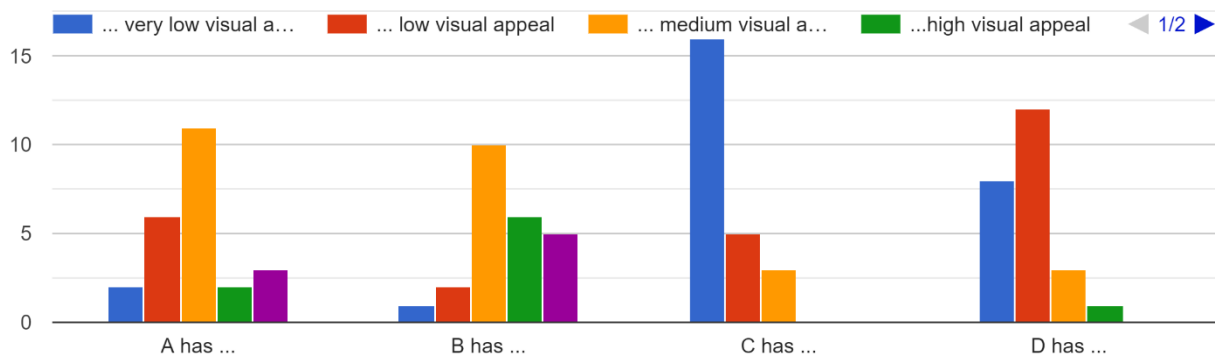
D

A: ours, B: ARF, C: StyleRF, D: StyleGaussian

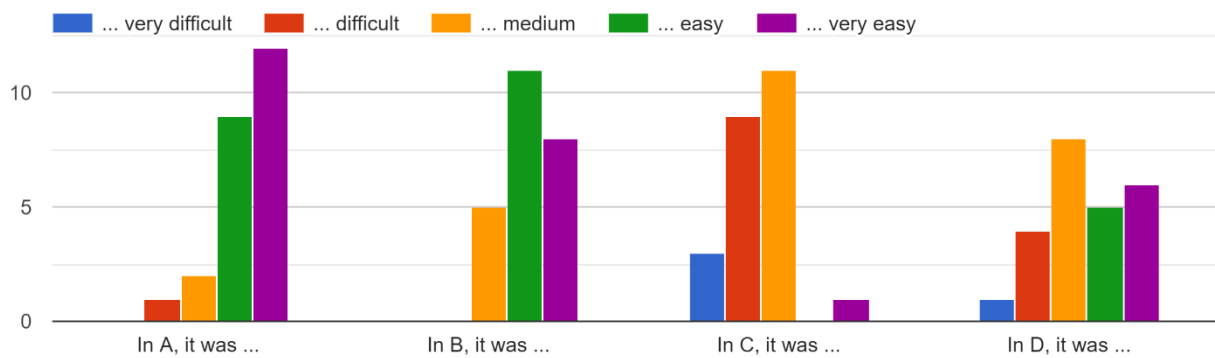
Please rank each of the stylized scenes (A, B, C) according to their similarity to the style exemplar ("Is the scene similar to the provided style exemplar?").



Please rate the stylized scenes (A, B, C) according to their visual appeal.



Please rate the stylized scenes (A, B, C) according to how easily you could recognize their original content (shapes, objects, etc.)



Case 11



Original



Style



A



B



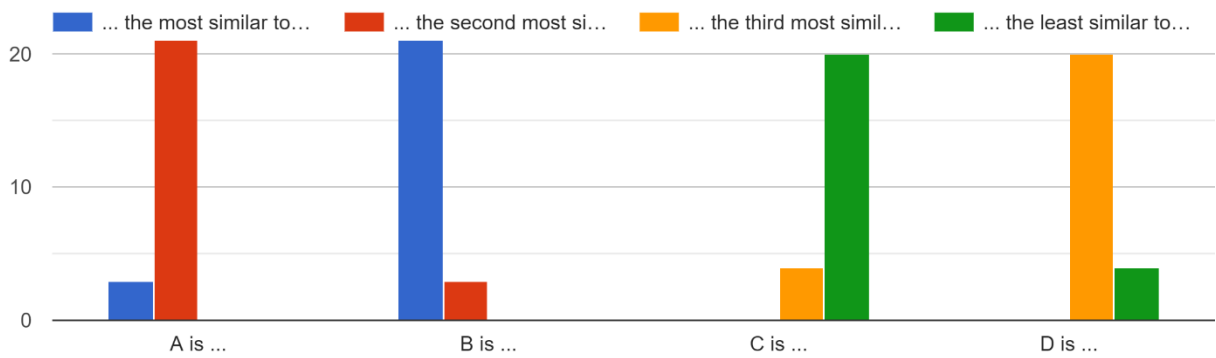
C



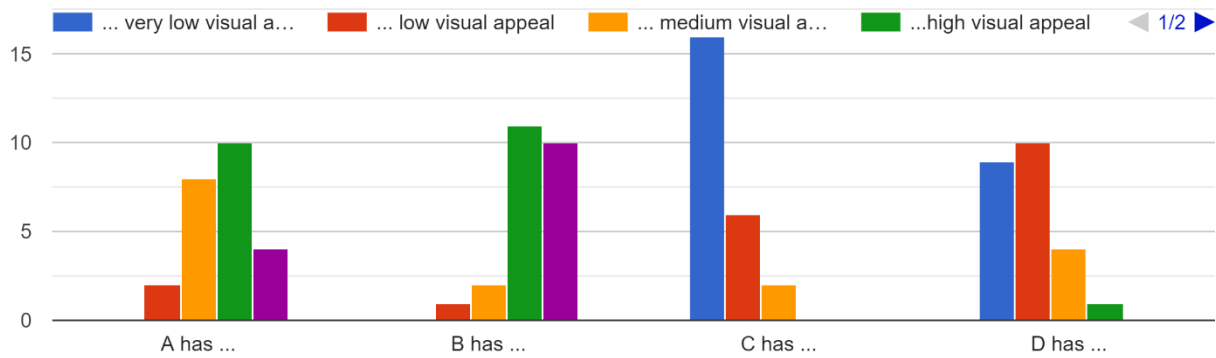
D

A: ours, B: ARF, C: StyleRF, D: StyleGaussian

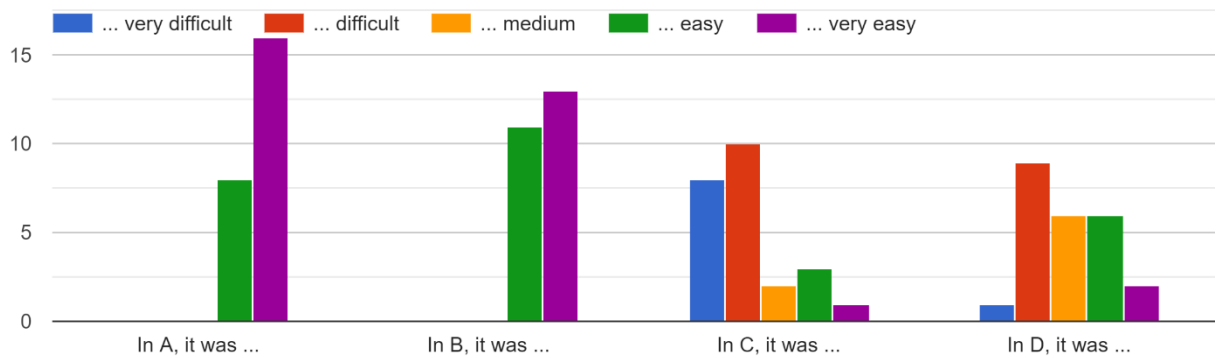
Please rank each of the stylized scenes (A, B, C) according to their similarity to the style exemplar ("Is the scene similar to the provided style exemplar?").



Please rate the stylized scenes (A, B, C) according to their visual appeal.



Please rate the stylized scenes (A, B, C) according to how easily you could recognize their original content (shapes, objects, etc.)



Case 12



Original



Style



A



B



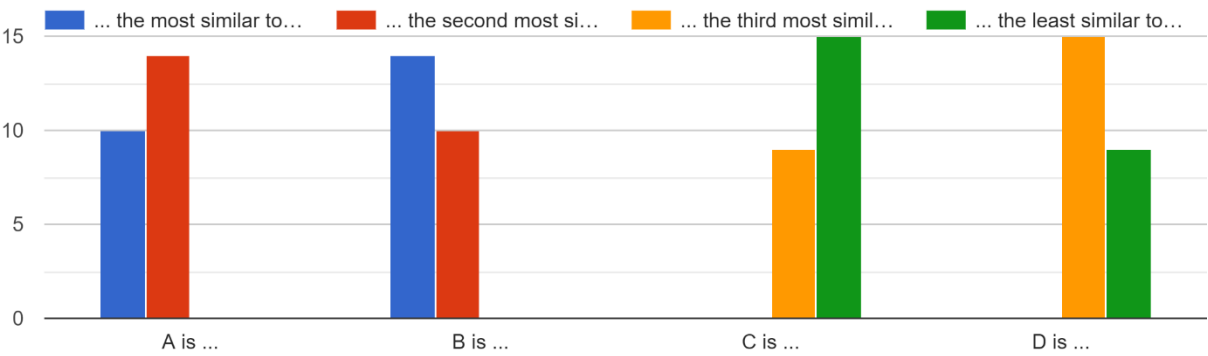
C



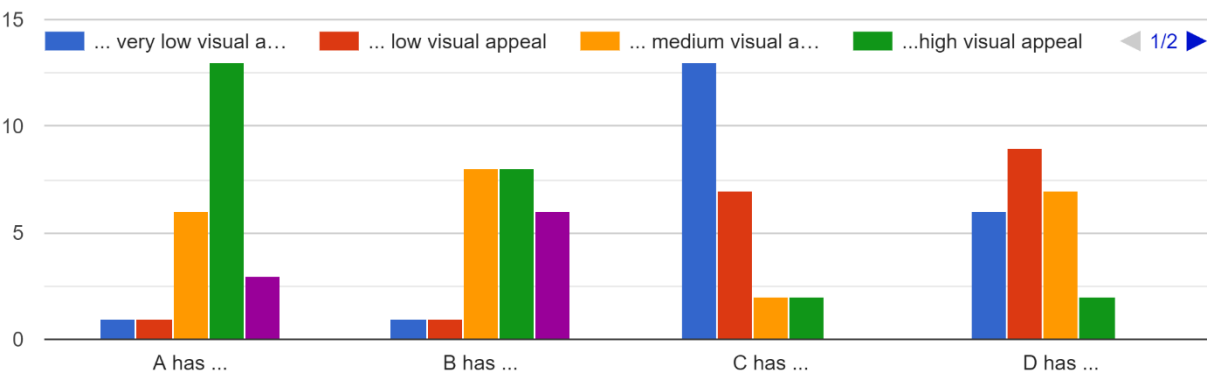
D

A: ours, B: ARF, C: StyleRF, D: StyleGaussian

Please rank each of the stylized scenes (A, B, C) according to their similarity to the style exemplar ("Is the scene similar to the provided style exemplar?").



Please rate the stylized scenes (A, B, C) according to their visual appeal.



Please rate the stylized scenes (A, B, C) according to how easily you could recognize their original content (shapes, objects, etc.)

